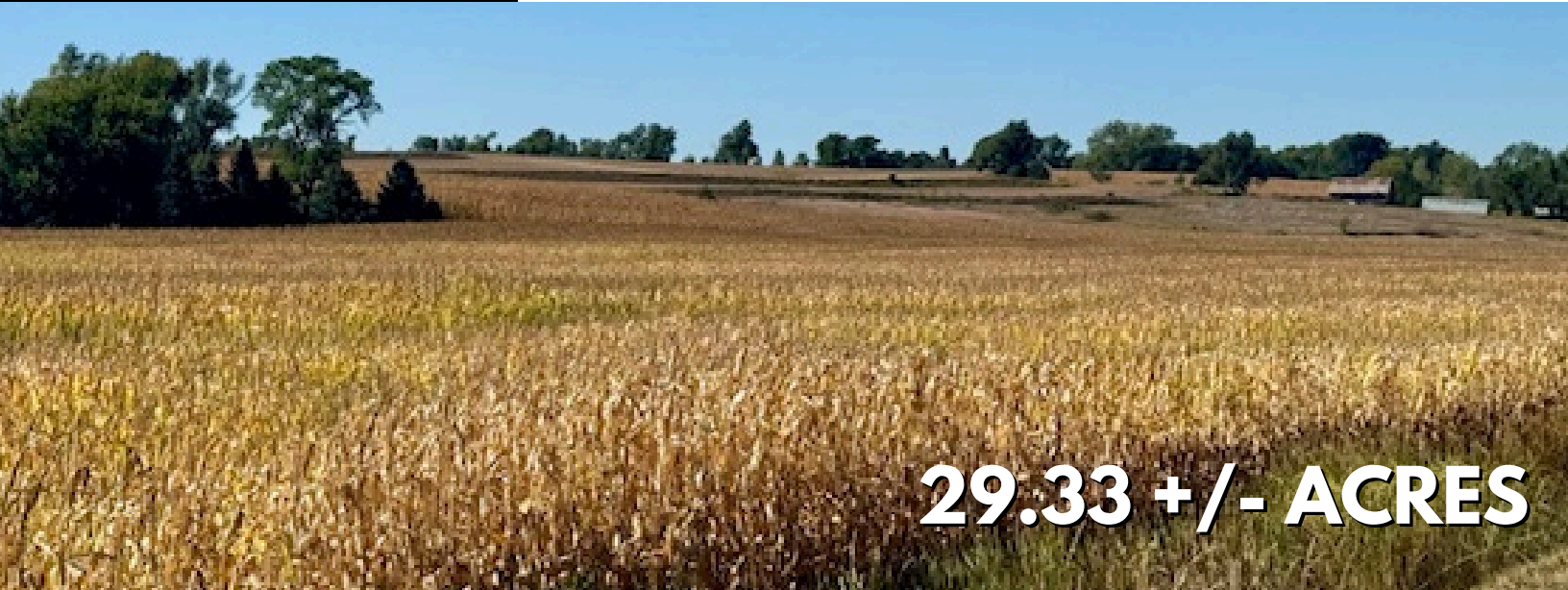




# LAND FOR SALE

DODGE COUNTY, NEBRASKA



## 29.33 +/- ACRES

For more information, contact:

**KYLE CONNOT**  
LAND SALES AGENT  
(402) 340-0493



**\*\*\* ONLINE LAND AUCTION \*\*\***  
in partnership with DPA Auctions

**HIGHLIGHTS**

PRODUCTIVE ROLLING FARMLAND

CONVENIENTLY LOCATED ONLY 1 MILE SOUTH OF SCRIBNER, NE

FULL POSSESSION IN 2025



VISIT US AT:

[www.StrackeRealty.com](http://www.StrackeRealty.com)

102 E. HWY 20 | STUART, NE 68780

CELL: (402) 340-0493

EMAIL: [kyle@strackerealty.com](mailto:kyle@strackerealty.com)



Stracke Realty, LLC, DBA Stracke Land & Realty has obtained this information from sources we have deemed reliable. All boundary lines contained in any advertising are for visual aid only and do not represent the location of any existing fence lines. Stracke Realty, LLC makes no guarantees, warranty or representation about the accuracy of this information. This information is submitted subject to the possibility of errors, omissions price changes, or any other conditions. All prospective buyers are urged to consult with their own tax and legal counsel and conduct their own investigation of the property or transaction.



# PROPERTY INFORMATION

29.33 +/- ACRES

DODGE COUNTY, NEBRASKA

PARTIAL LEGAL DESCRIPTION: PT NE1/4NE1/4 SECTION 7, TOWNSHIP 19, RANGE 7 EAST OF THE 6TH P.M.

## PROPERTY DESCRIPTION:

This productive, rolling farmland offers an excellent opportunity for those seeking quality acreage in a highly desirable location. Conveniently located near Highway 275, just 1 mile south of Scribner along County Road 14, this property provides easy access for farming operations. Full possession will be available in 2025, making this a perfect investment for those looking to secure productive farmland in the coming year.

**2023 TAXES:** \$1,334.70

## PROPERTY LOCATION:

From Hwy 275 at Scribner, go south on County Road 14 one mile to the NE corner of the farm.

## TO BID VISIT:

[www.DPAAuctions.com](http://www.DPAAuctions.com)

Bidding Ends: October 31, 2024

**KYLE CONNOT**  
LAND SALES AGENT  
(402) 340-0493



Stracke Realty, LLC, DBA Stracke Land & Realty has obtained this information from sources we have deemed reliable. All boundary lines contained in any advertising are for visual aid only and do not represent the location of any existing fence lines. Stracke Realty, LLC makes no guarantees, warranty or representation about the accuracy of this information. This information is submitted subject to the possibility of errors, omissions price changes, or any other conditions. All prospective buyers are urged to consult with their own tax and legal counsel and conduct their own investigation of the property or transaction.